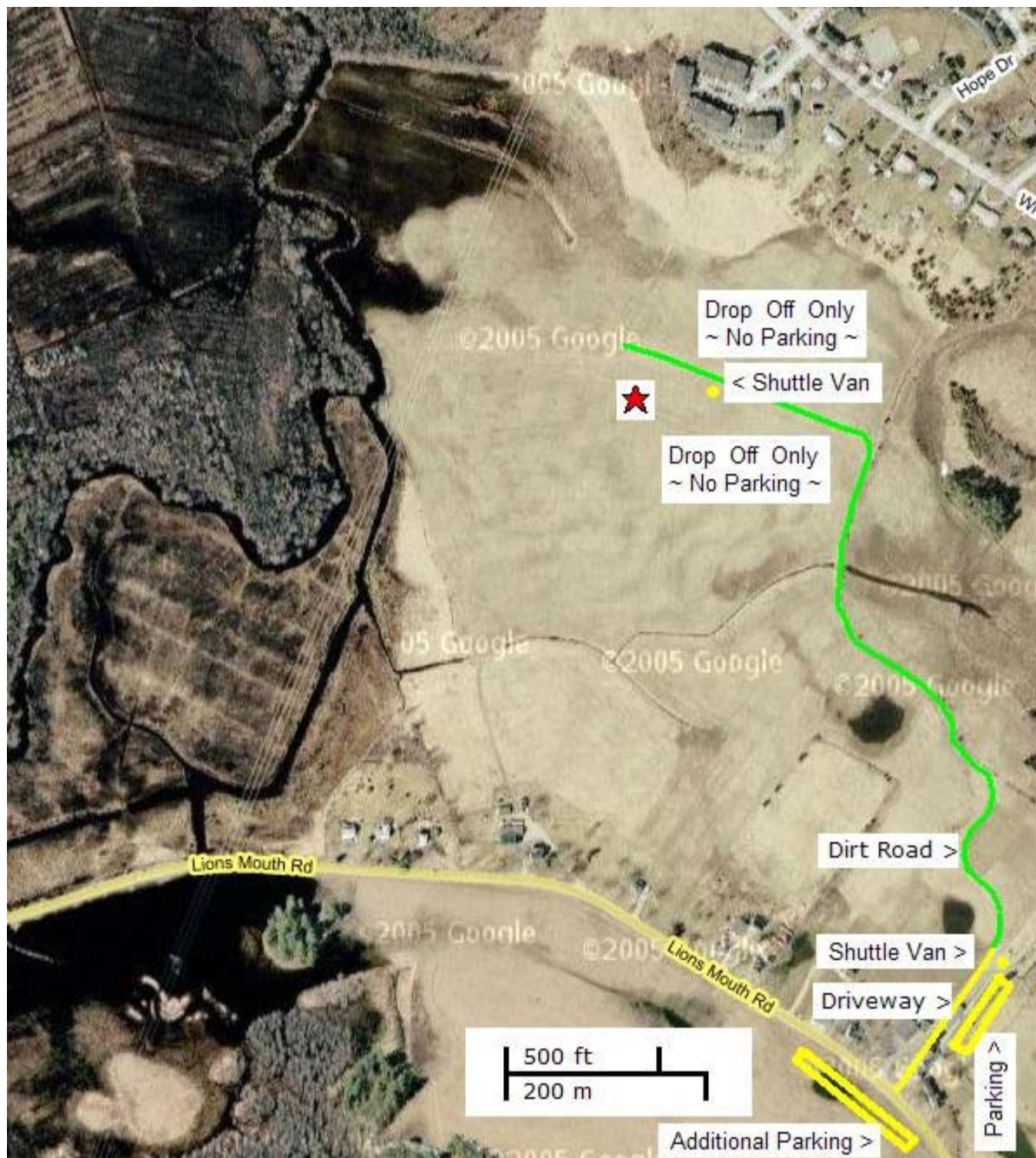




# THE NEMROC 2009 LAUNCH SITE

## WOODSOM FARM PARK, AMESBURY



Above is an aerial photograph of the 370 acre Woodsom Farm Park field. Our launch site is located at the end of the dirt road in the top center of the picture. The launch is scheduled for Sunday October 25, 2009 with no rain date.

The entrance to the field is at 212 Lion's Mouth Road. Look for the lion statue and turn in to the driveway. Drive slowly past the soccer field parking lot and drive up the dirt road to the launch site. Keep your speed down to about 10

mph to avoid raising dust clouds and road damage. We can not park on the field this year so you will drop off your equipment at the launch site and drive back to the soccer field parking lot and park. A shuttle van will bring you back to the launch area. This unfortunately is a part of our use permit from the city of Amesbury. The field is not open to the public and is reserved by the club for specific dates for our launches. Launching at other times by other people, club members or not, is not authorized.

If the weather looks questionable, call the CMASS Launch Line at 1-781-231-1018 before heading out to the field after 8:00 AM on the morning of the launch for the launch status. Please do NOT call the above number for schedule date/times changes which are posted at <http://www.cmass.org>. Launch hours are from 10:30-16:30 EDT with setup beginning at 09:30 EDT. In November, all times are ½ hour earlier. Map and driving directions are shown below.

## **Directions to WOODSOM FARM PARK, AMESBURY**

### **From the South**

Get to **I-95 N**. Stay on **I-95 N** and take the **RT-110 W exit**, exit number 58B, towards **I-495/AMESBURY** and merge onto **MACY ST/MA-110W**. Stay on **RT-110 W** for several miles till you come to the light at **MA-150/HILLSIDE AVE**. Take a **RIGHT** at the lights onto **MA-150/HILLSIDE AVE**. Go another 0.4 miles and turn **LEFT** onto **HIGHLAND ST**. After another 0.4 miles turn **SLIGHT LEFT** onto **LIONS MOUTH RD**. **Woodsom Farm Park** is 0.7 miles ahead on **the right at the lion statue**.

### **From the North**

Get to **I-95 S**. After entering MA take the **I-495 S** exit, exit number **59**, towards **WORCESTER** and merge onto **I-495**. Go 2.0 miles on **I-495** and take the **RT-150** exit, exit number **54**, towards **AMESBURY**. Keep **RIGHT** at the fork in the ramp and merge onto **MA-150 EXT**. Go ahead 0.4 miles where **MA-150 EXT** becomes **MA-150/HILLSIDE AVE**. crossing **MA-110**. Go another 0.4 miles and turn **LEFT** onto **HIGHLAND ST**. After another 0.4 miles turn **SLIGHT LEFT** onto **LIONS MOUTH RD**. **Woodsom Farm Park** is 0.7 ahead on **the right at the lion statue**.

### **From the West**

Get to **I-495 N**. Take the **RT-150** exit, exit number **54**, towards **AMESBURY**. Keep **RIGHT** at the fork in the ramp and merge onto **MA-150 EXT**. Go ahead 0.4 miles where **MA-150 EXT** becomes **MA-150/HILLSIDE AVE**. crossing **MA-110**. Go another 0.4 miles and turn **LEFT** onto **HIGHLAND ST**. After another 0.4 miles turn **SLIGHT LEFT** onto **LIONS MOUTH RD**. **Woodsom Farm Park** is 0.7 ahead on **the right at the lion statue**.

